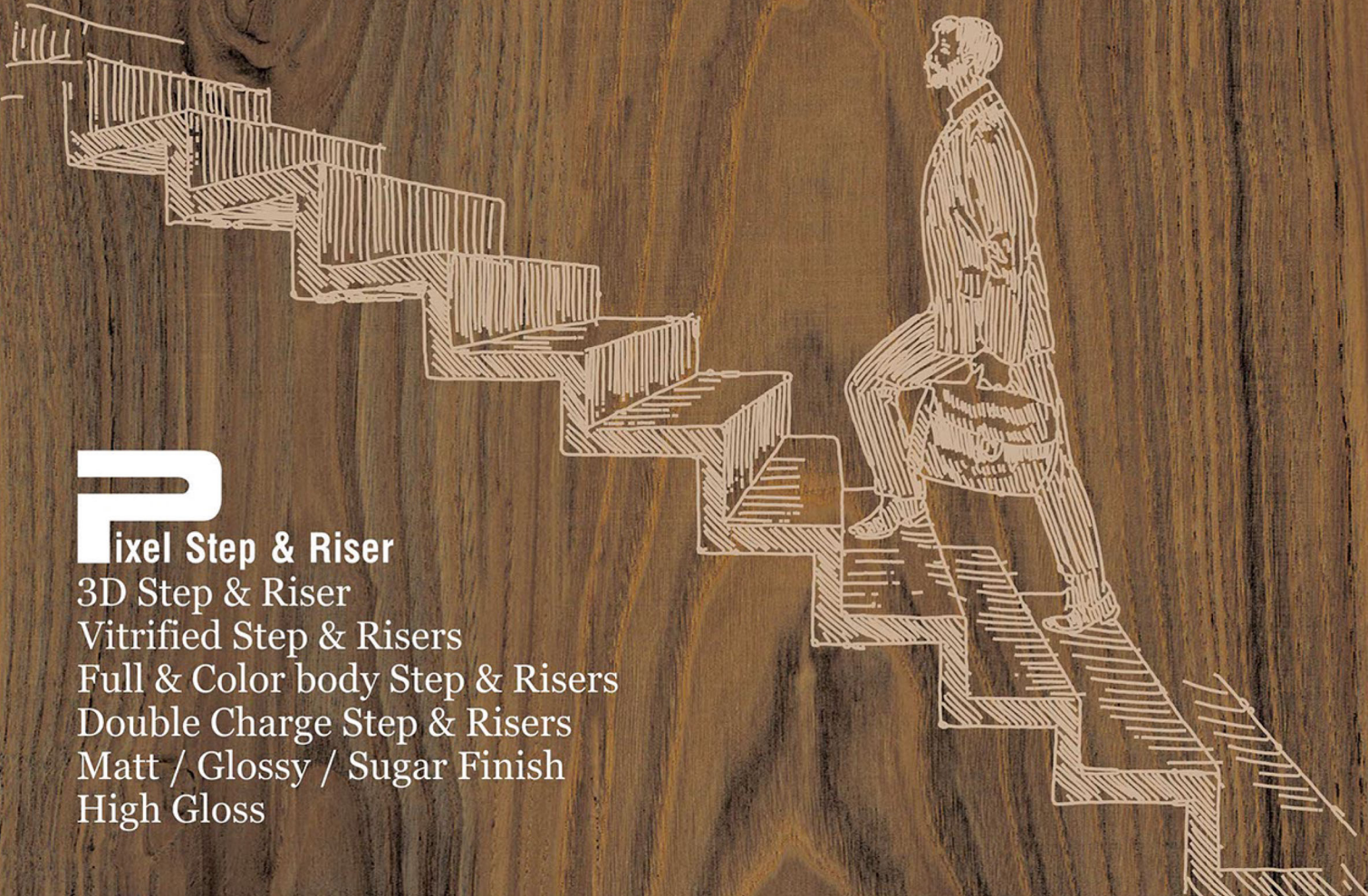


100+

Design in
First Time
Step & Riser



Pixel Step & Riser
3D Step & Riser
Vitrified Step & Risers
Full & Color body Step & Risers
Double Charge Step & Risers
Matt / Glossy / Sugar Finish
High Gloss

VITRIFIED
STEP & RISER

FULL BODY
3 FEET STEP TILE

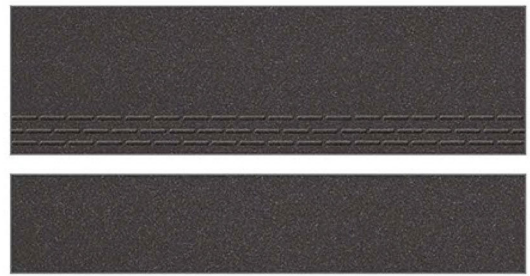
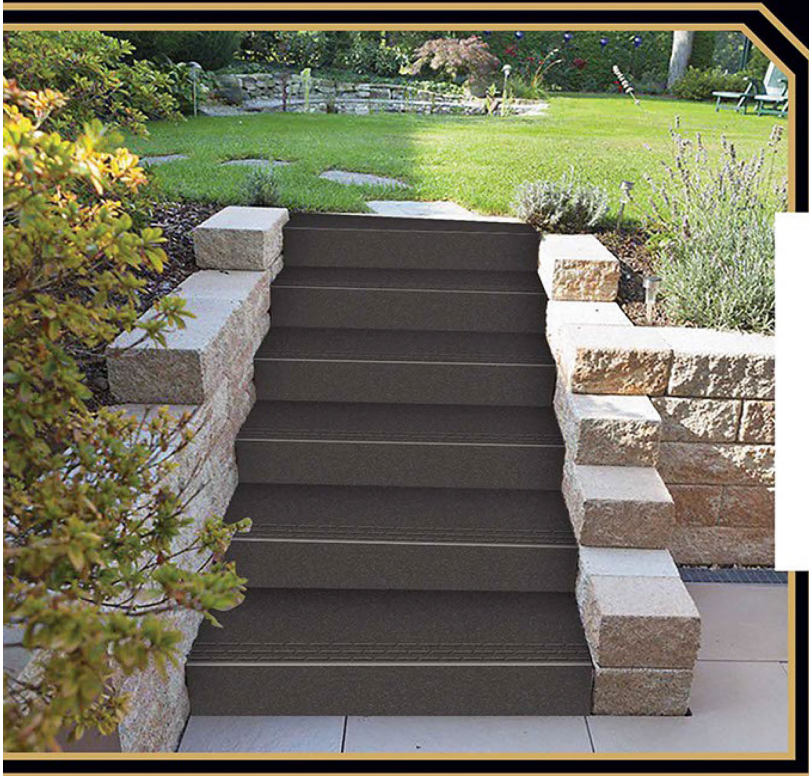
900x300mm

900x200mm



301

Matt Finish



302

Matt Finish



STEP TILE



INTERIOR USE



WATER RESISTANT



SATIN RESISTANT



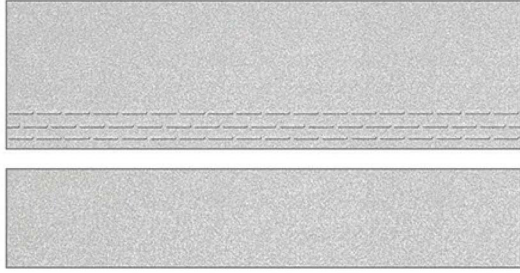
RANDOM

VITRIFIED
STEP & RISER

FULL BODY
3 FEET STEP TILE

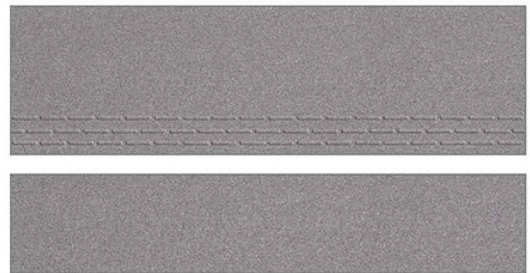
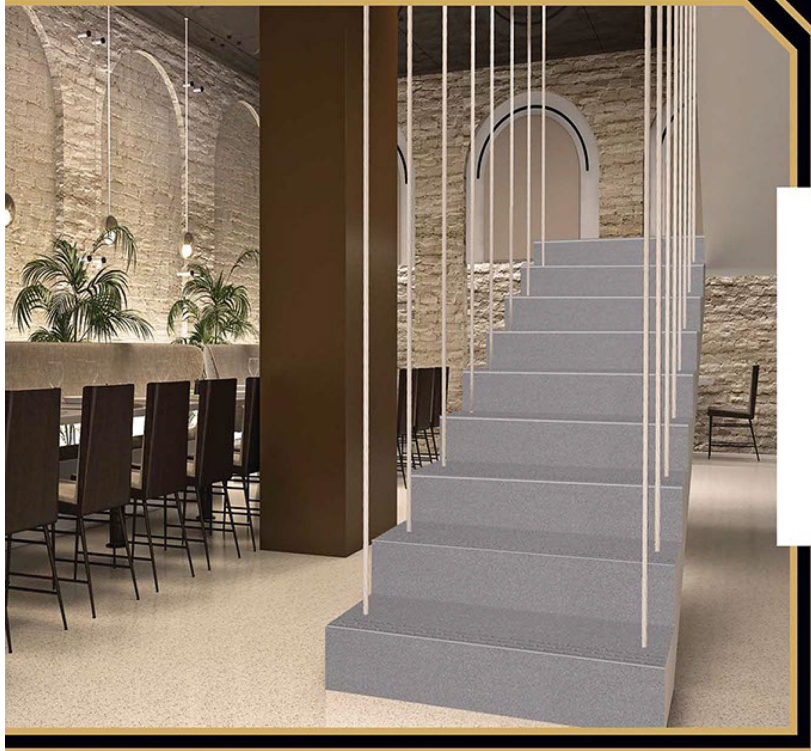
900x300mm

900x200mm



304

Matt Finish



306

Matt Finish

PACKING DETAILS

PRODUCT	SIZE	PISCES (Per box)	THICKNESS (Approx)	WEIGHT (Per box Approx)
Step	1200X300mm (4-Feet)	3.Pic.	11mm	24.5 kg
Riser	1200X200mm (4-Feet)	3.Pic.	11mm	16.0 kg
Step	1000X300mm (3.25-Feet)	4.Pic.	11mm	28.0 kg
Riser	1000X200mm (3.25-Feet)	4.Pic.	11mm	18.8 kg
Step	900X300mm (3-Feet)	4.Pic.	11mm	24.0 kg
Riser	900X200mm (3-Feet)	4.Pic.	11mm	16.0 kg

FULL BODY

Step	1200X300mm (4-Feet)	3.Pic.	11mm	25.0 kg
Riser	1200X200mm (4-Feet)	3.Pic.	11mm	16.5 kg

DOUBLE CHARGE

Step	1200X300mm (4-Feet)	3.Pic.	11mm	25.5 kg
Riser	1200X200mm (4-Feet)	3.Pic.	11mm	16.0 kg

APPLICATION



FULL BODY
VITRIFIED TILES

Riser - 900x200mm
Step - 900x300mm



Layers Of
Light And
Dark Rich In

DEPTH

Dene A Matter

The
Largest
Manufacturer...

“Our Product”

“Step & Risers”

4 Feet / 1200x300mm / 1200x200mm

3.25 Feet / 1000x300mm / 1000x200mm

3 Feet / 900x300mm / 900x200mm